

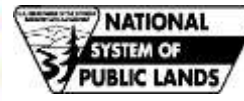


The Western Section of The Wildlife Society and Wildlife Research Institute

Western Raptor Symposium February 8-9, 2011 Riverside, California



Symposium
Sponsors



February 8 – 01:05-01:25 pm Session: Overviews – Diurnal Raptors

Golden Eagle Status in Selected Areas of the West

Dave Bittner and Chris Meador, Wildlife Research Institute, Inc., 18030 Highland Valley Road, Ramona CA 92065. (760) 789-3992; dbittner@wildlife-research.org

Golden Eagles are large predatory birds and raising young takes a large investment of time and energy. Breeding in Southern California starts in January and the adult eagles continue to feed fledged young and teach them to hunt until late November. These eagles respond to environmental changes in order to survive and reproduction in Golden Eagles, as in many predators, is regulated by prey species abundance. Since 1998, Western North America has been in a prolonged drought with occasional wet years. This cycle has affected many species, including Golden Eagles and their prey, like Jack Rabbits and Ground Squirrels. Golden Eagle adults have persevered but reproduction rates have dropped to as low as 12% in some regions, such as the Mojave and Sonora Deserts of the American Southwest. Helicopter and ground-based studies conducted annually and in selected areas in 2003, 2008 and 2010 by the Wildlife Research Institute for the public and private sector have documented these low reproductive levels. Lowered reproduction, however, is not only the result of drought conditions. Loss of foraging habitat and disturbance at the nest site by climbers, OHVs, and other recreational activity is also associated with loss of reproduction. We will review these cycles and population estimates in selected areas of Western North America.

The authors and institutions that have provided the following presentations are happy to share their information, data, and opinions. However, these are not, necessarily, peer-reviewed presentations and the potential to take something out of context also exists. In order to avoid that, you are requested to contact the respective lead author(s) before using specific information contained in any of the following papers. Once you have done that, the proper citation is: "[Author(s). Date. Title.] Presented at the Western Raptor Symposium. Jeffrey L. Lincer and David Bittner (Co-Chairs). Hosted by Wildlife Research Institute and The Wildlife Society, Western Section. Riverside Convention center, Riverside, California, USA. February 8-9, 2011

GOLDEN EAGLE STATUS IN SELECTED AREAS OF THE WEST

Estimates of Golden Eagle Territories in Western
North America with a Focus on Southern California

Dave Bittner, Chris Meador, Renée Rivard, Brittany Schlotfeldt, and
Jeff Lincer, Wildlife Research Institute, Inc.



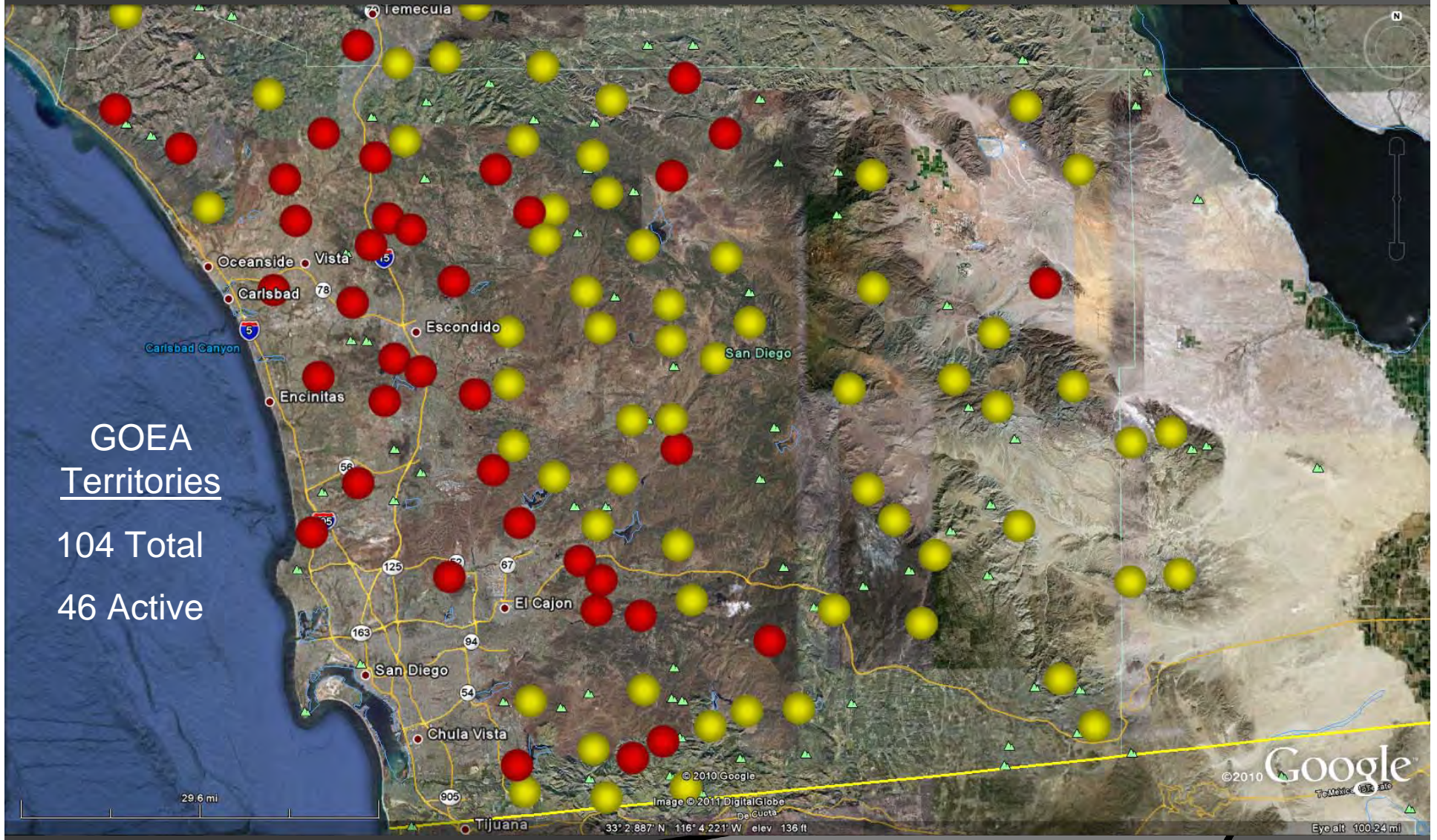








Southern California San Diego 1895 - 2011



GOEA
Territories
104 Total
46 Active

29 miles



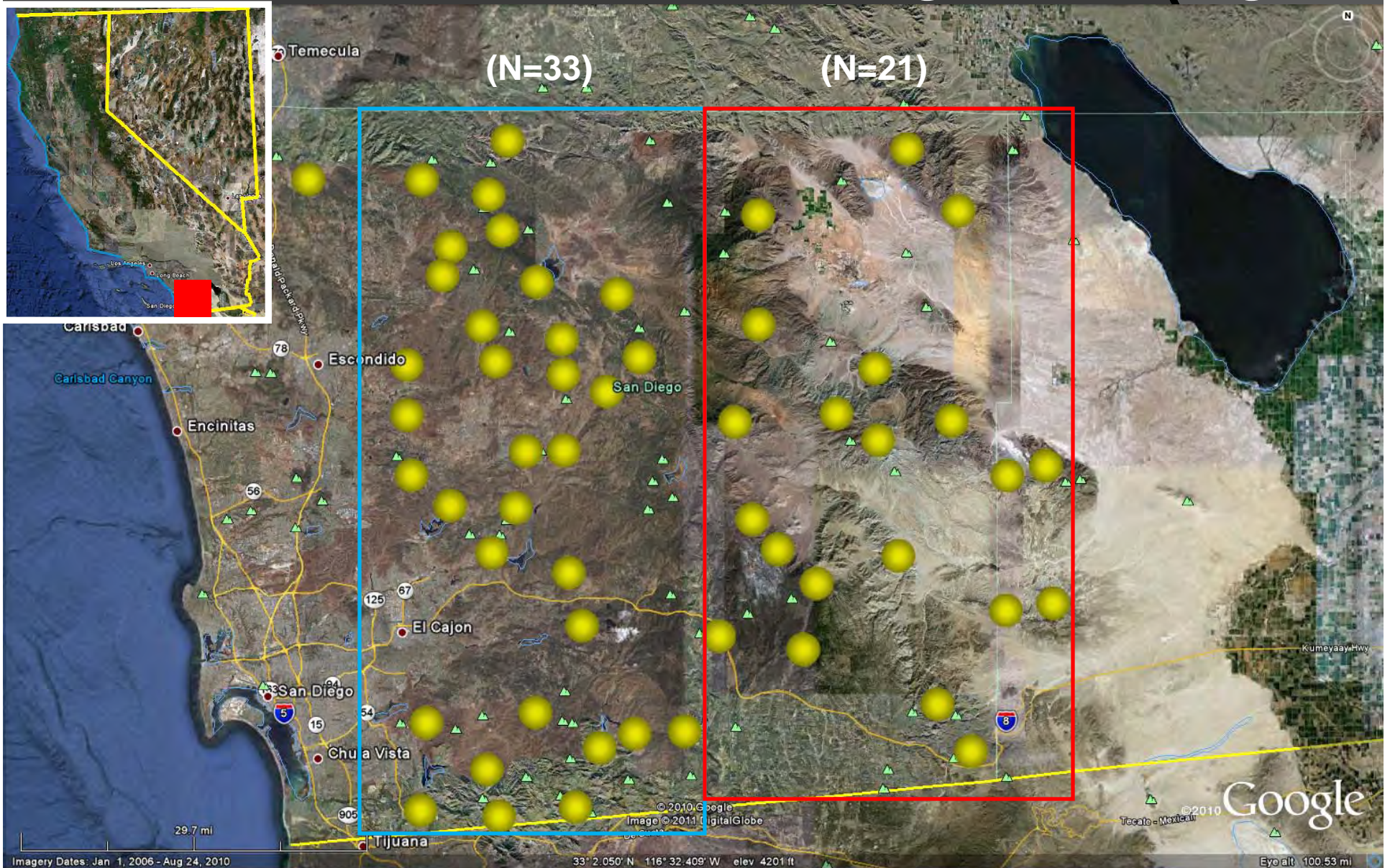


**San Diego County
Upland**



Anza-Borrego Desert

Southern California San Diego & Anza-Borrego



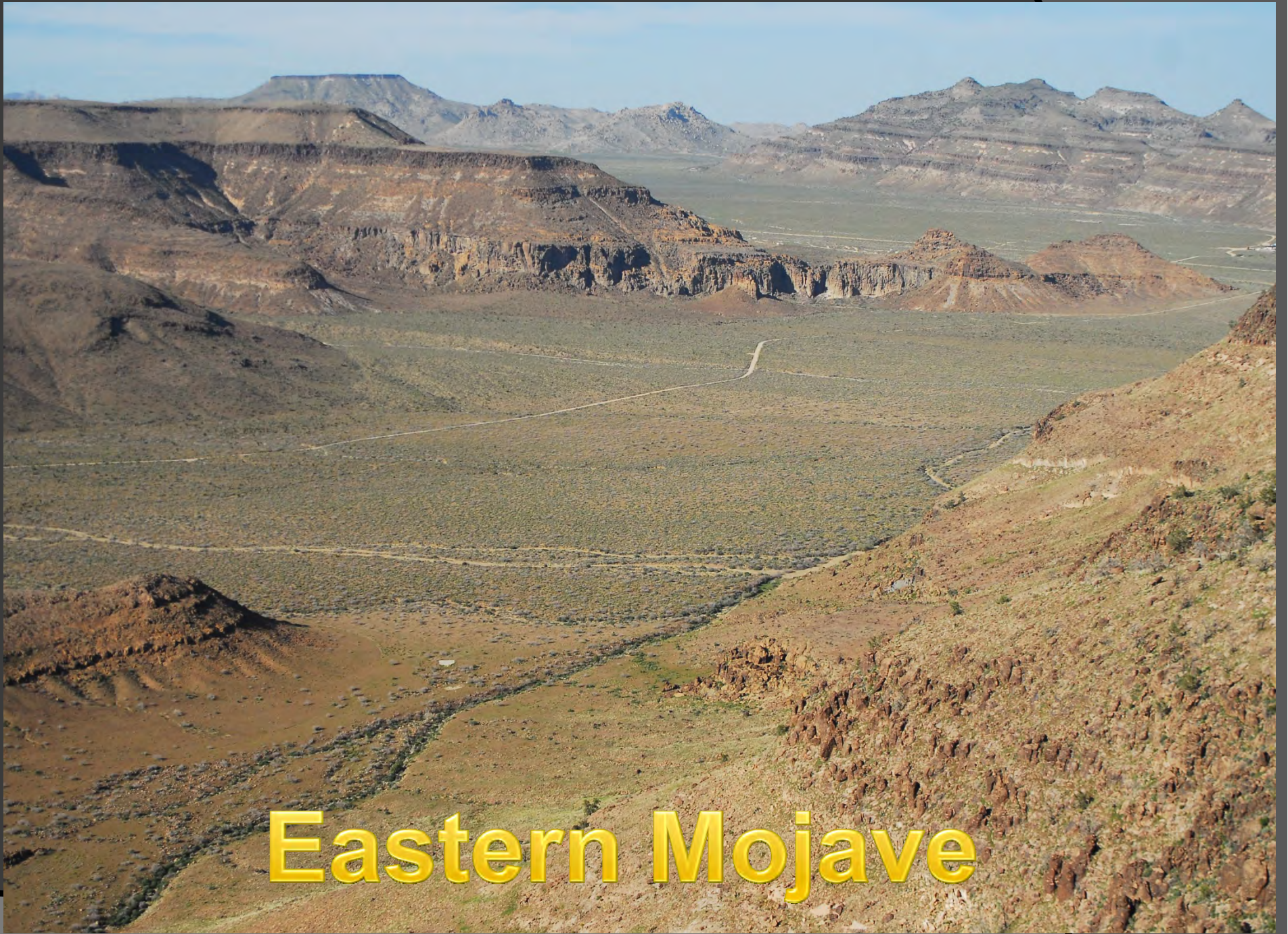
29 miles

Average territory area ~36 vs. 62 sq mi



Southern Mojave





Eastern Mojave





Western Mojave





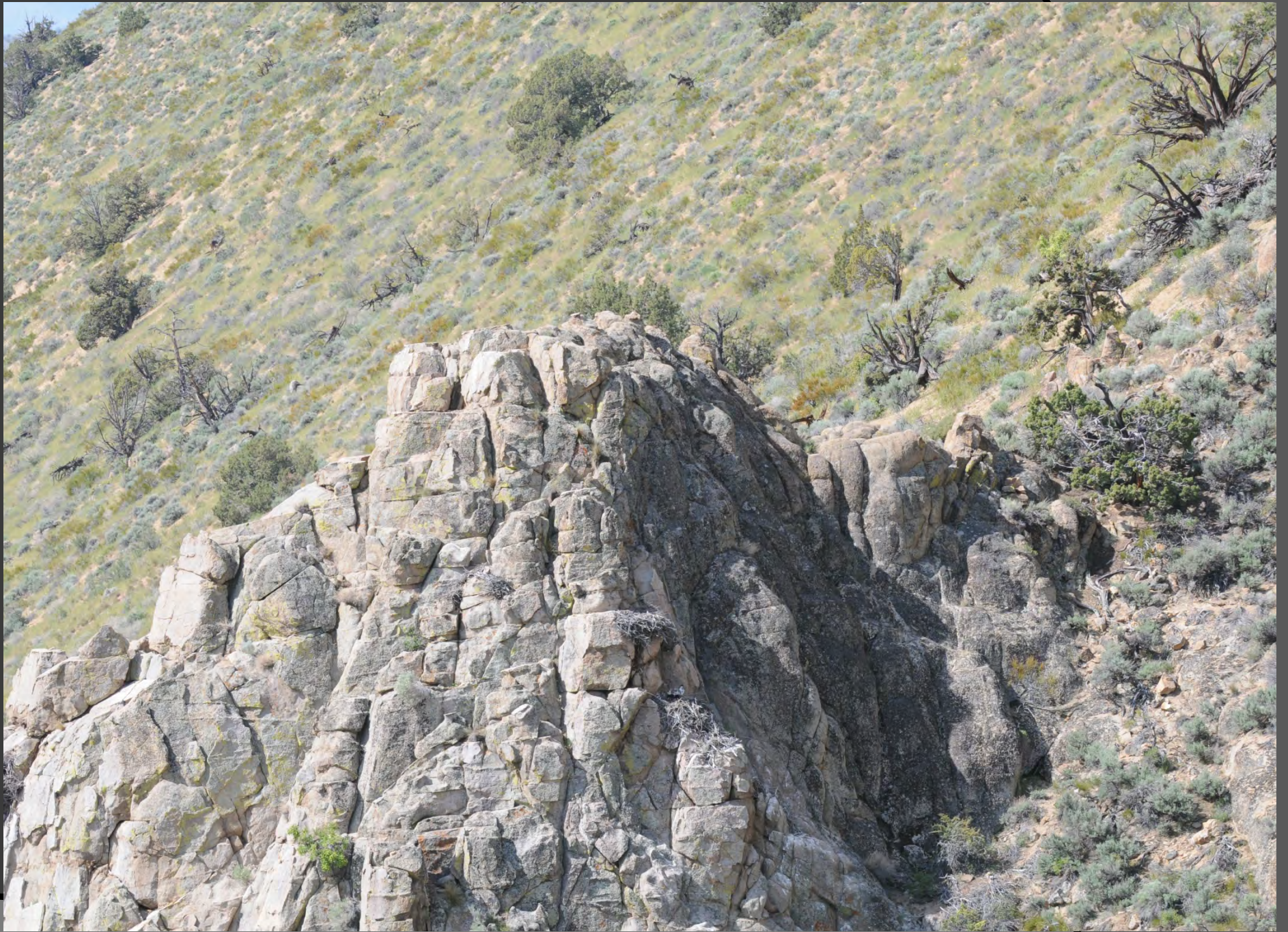
Tehachapi Pass





Pah Rah Mountains



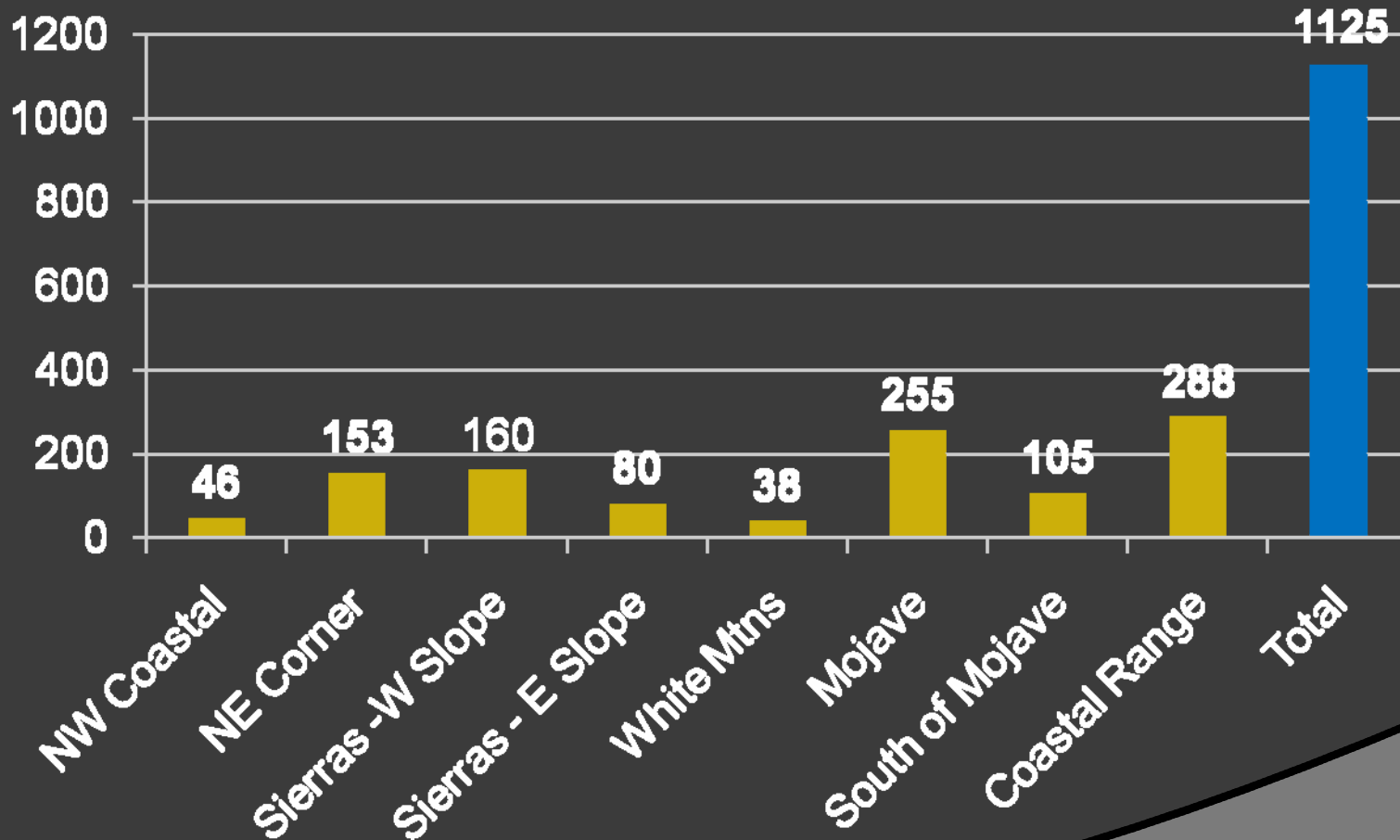




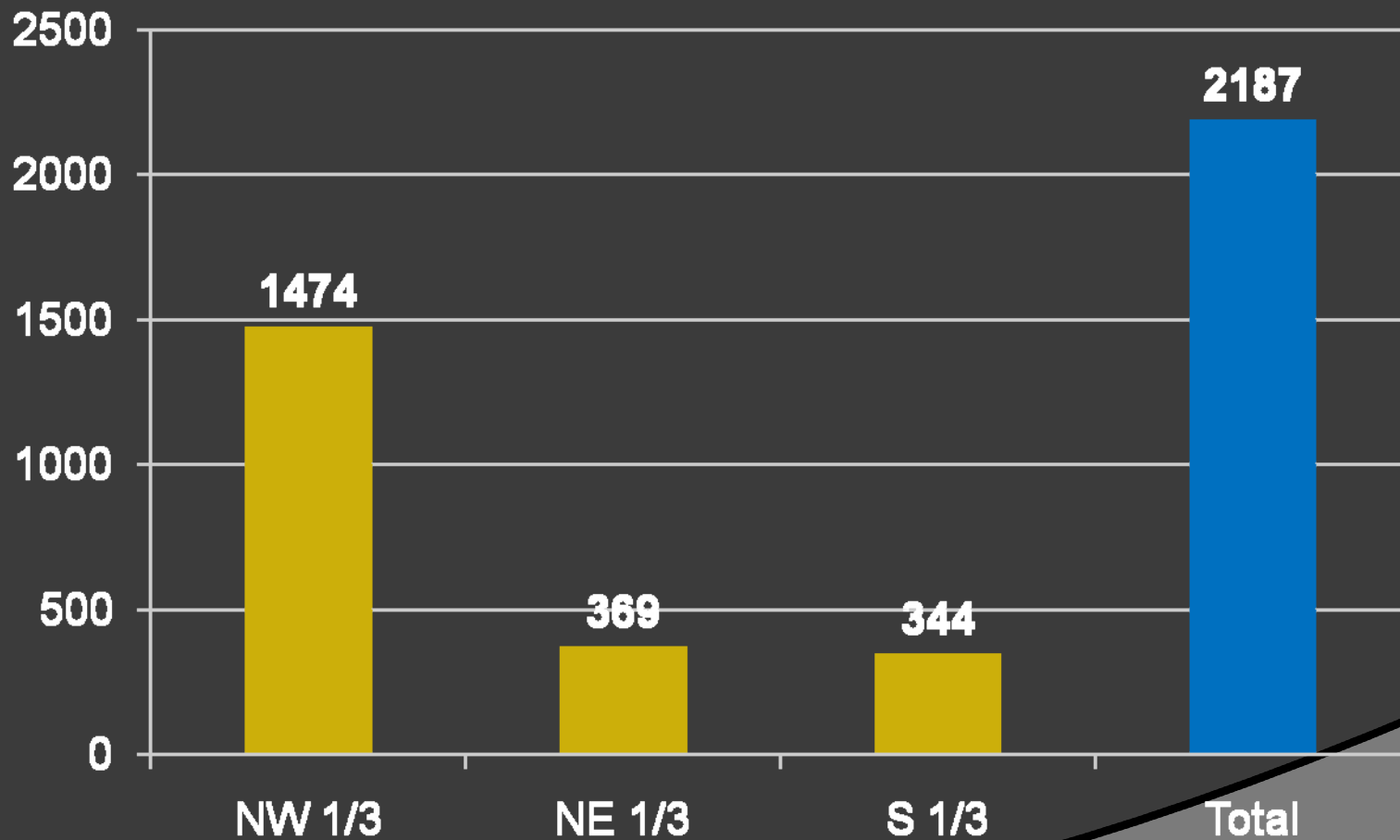




California GOEA Territory Estimates



Nevada GOEA Territory Estimates



Golden Eagle Territory Estimates



Acknowledgements



- Anza-Borrego Desert State Park
- Arizona Game and Fish Dept., Eric Gardner and Jamey Driscoll
- Bureau of Land Management
- Environmental Science Associates
- Hawk Watch International
- Idaho Dept. of Fish and Game, Colleen Molton
- Ironwood Consulting
- Jeff Smith, PhD
- Joshua Tree National Park
- Montana Parks and Wildlife
- Nevada Dept. of Wildlife, Larry Neel
- Oregon Dept. of Fish and Wildlife, Peter Moore and Martin Nugent
- Tetra Tech EC
- US Forest Service
- US Geological Society emeritus, Michael Kochert
- Wyoming Game and Fish Dept., Bob Oakleaf
- WRI Volunteers