



The Western Section of The Wildlife Society and Wildlife Research Institute

Western Raptor Symposium
February 8-9, 2011
Riverside, California



Symposium
Sponsors



February 8 – 08:40-09:10 am Session: Keynote Address

Protecting Raptors through Law and Policy

Daniel J. Rohlf, Professor of Law, Clinical Director, Pacific Environmental Advocacy Center, Lewis and Clark Law School; Portland, OR 97219; rohlf@lclark.edu

No Abstract provided.

The authors and institutions that have provided the following presentations are happy to share their information, data, and opinions. However, these are not, necessarily, peer-reviewed presentations and the potential to take something out of context also exists. In order to avoid that, you are requested to contact the respective lead author(s) before using specific information contained in any of the following papers. Once you have done that, the proper citation is: "[Author(s). Date. Title.] Presented at the Western Raptor Symposium. Jeffrey L. Lincer and David Bittner (Co-Chairs). Hosted by Wildlife Research Institute and The Wildlife Society, Western Section. Riverside Convention center, Riverside, California, USA. February 8-9, 2011

THE 21ST CENTURY CHALLENGES OF RAPTOR BIOLOGY



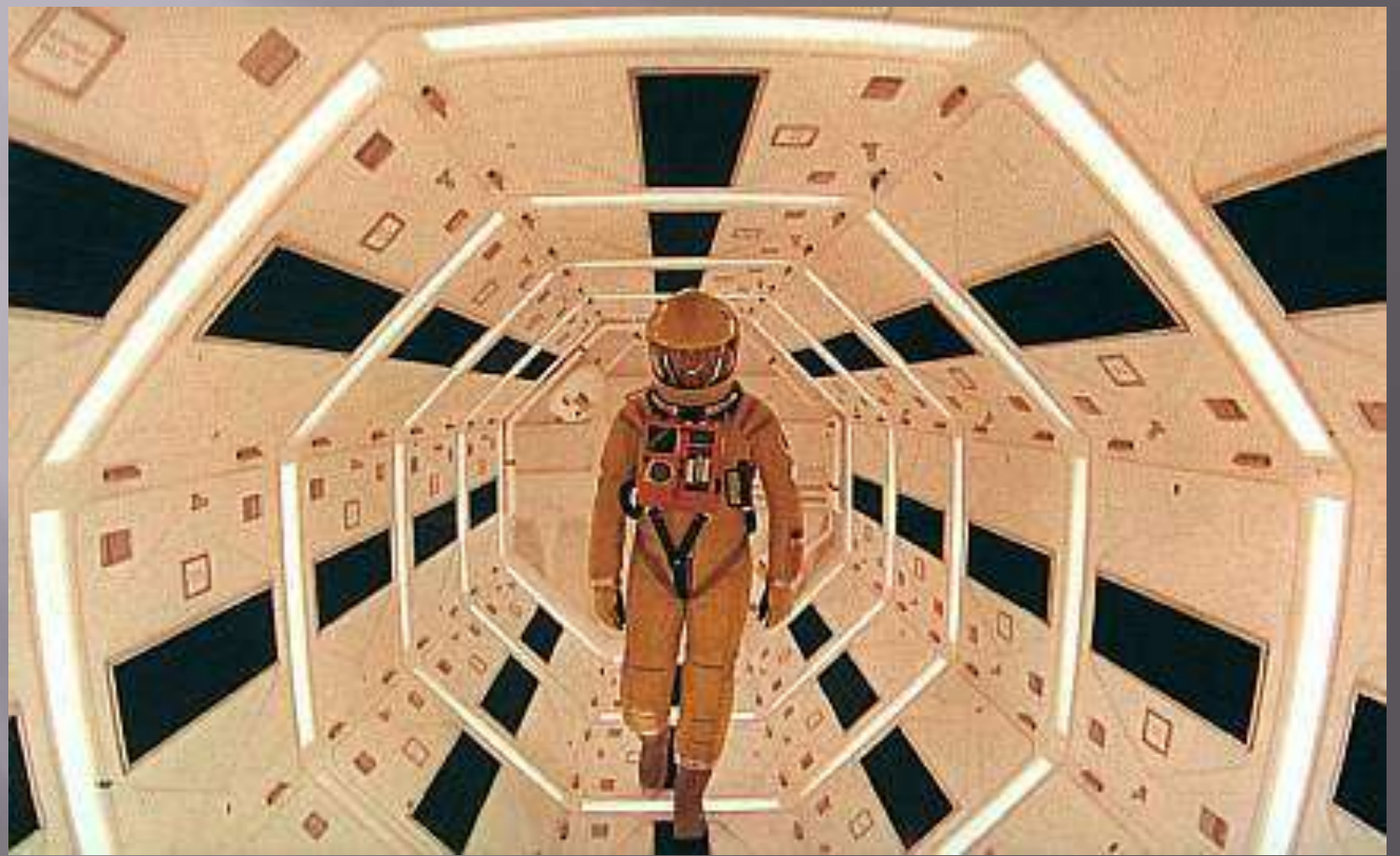
Professor Dan Rohlf
Lewis and Clark Law School











Sentinel of Eternity



Before there were men on Earth, a tiny, unworldly
creature lived alone on this planet. What
could inspire him that he should ever fly?

By ARTHUR C. CLARKE





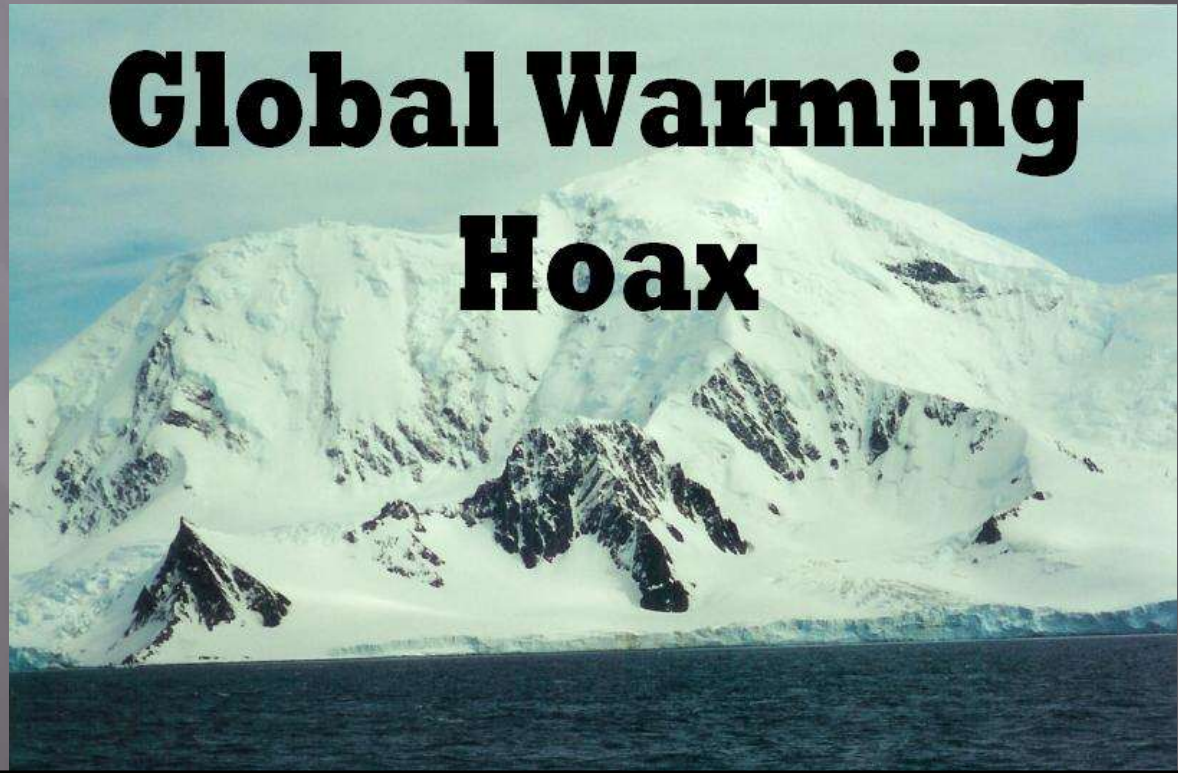








Global Warming Hoax



OBSERVE



SETH ROGEN
**OBSERVE
AND
REPORT**

APRIL 10

PARAMOUNT PICTURES

R
RESTRICTED
Under 17 requires
accompanying parent
or adult guardian
Some material may be
offensive to children

WARNER BROS. PICTURES PRESENTS





BGEPA incidental take

CURRENT STANDARD

- ▣ Final interpretation of no net loss idea allow actions that are “*consistent with the goal of stable or increasing breeding populations.*”

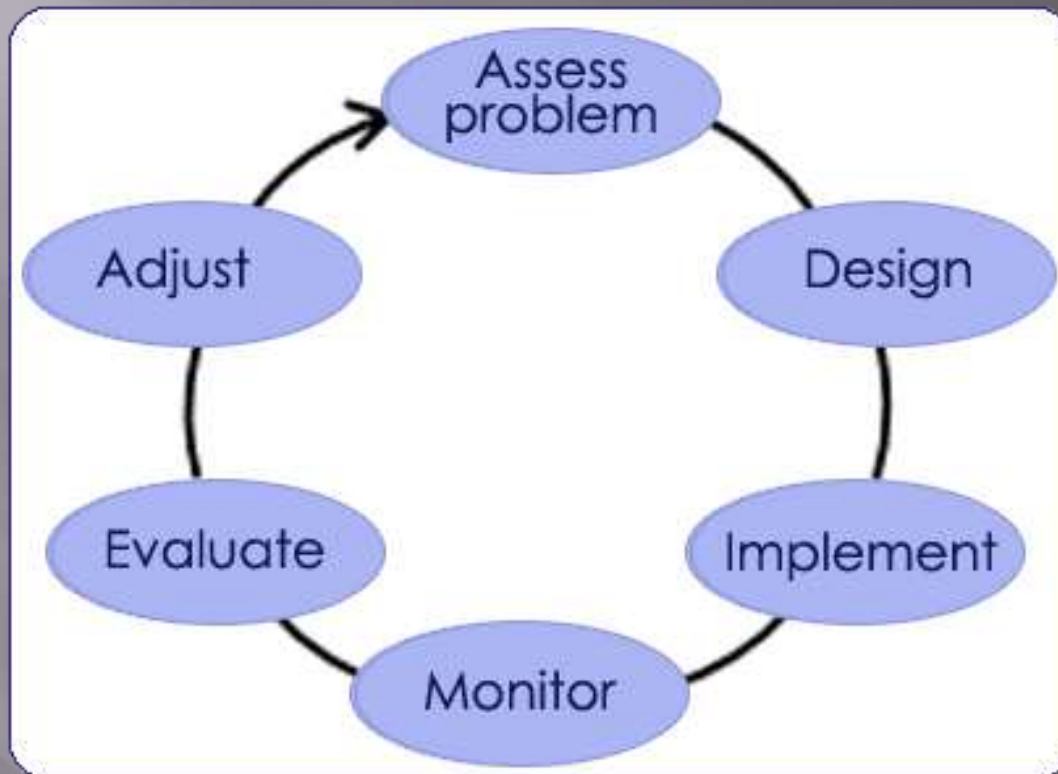
INITIAL STANDARD

- ▣ “*Maintaining increasing or stable populations*” “could be misapplied to constrain any authorization of take because any take of a bald or golden eagle by some degree results in a population decrease, even if short-term and inconsequential for the long-term preservation of the species.”











amended and said bill
and said bill passed by Senate
third reading, restored to third
vote reconsidered, committee discharged, bill
committee on Rules -- committee discharged, bill
recommitted to said commit-

state finance
ary law, the
tion to s
horities

ATE OF
S:

le. Th
govern

ings.
lexity

systems
operation

the judic
ranchise that

cash, invest
and personal

the require
d in an

shall be known
accountability

aw, the legisla-
and the public
for state
ciary

ND ASSEM-

cited as
internat

that
necessary
son

the publi

the heads of

actual ser

duly

economical

matter

SCIENCE PROCESS

The rules of the game

Cumulative effects

NEPA

- ▣ The impacts of past, present and reasonably foreseeable future actions

ESA

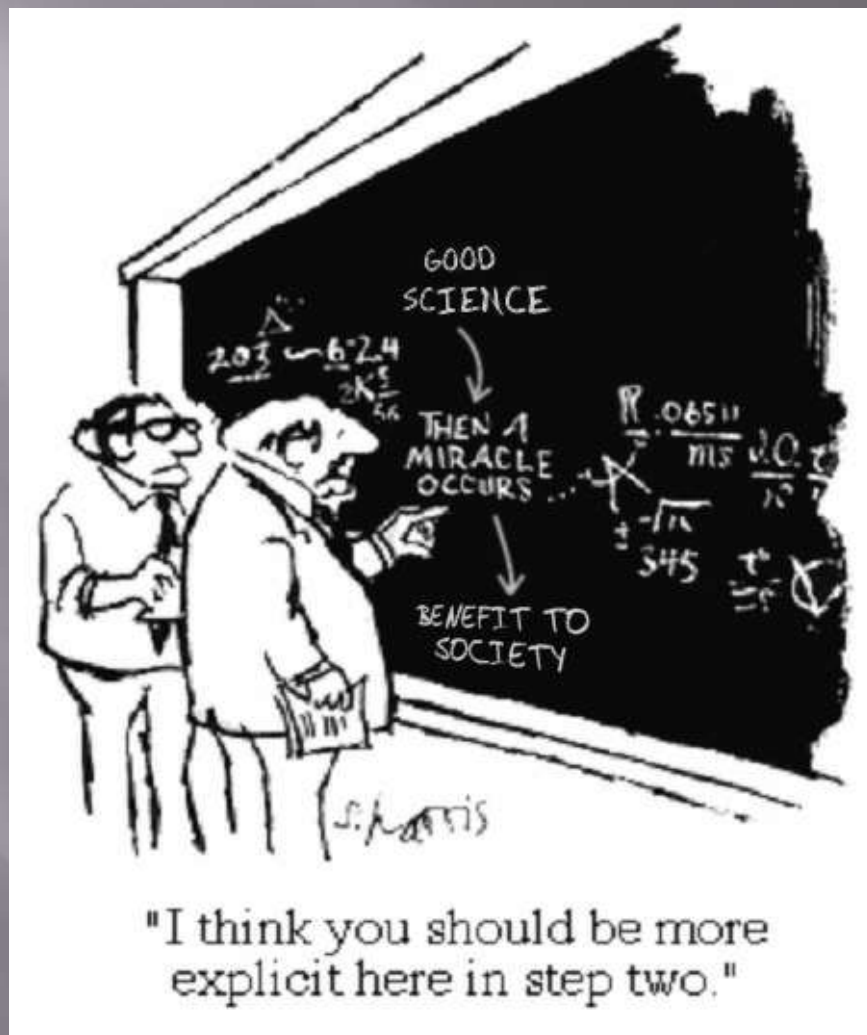
- ▣ Future non-federal actions that are reasonably certain to occur in the action area



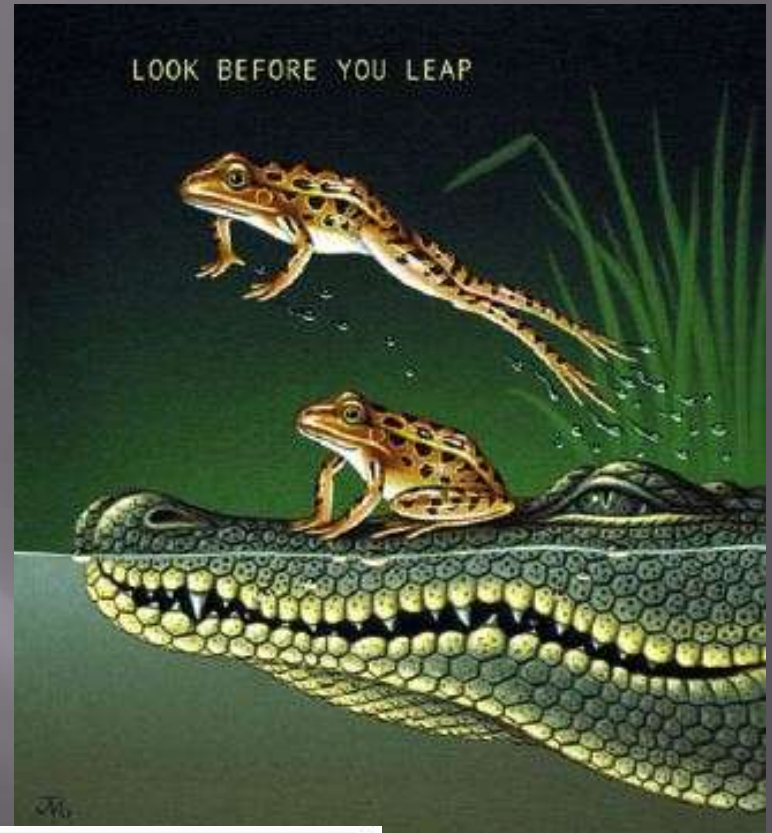


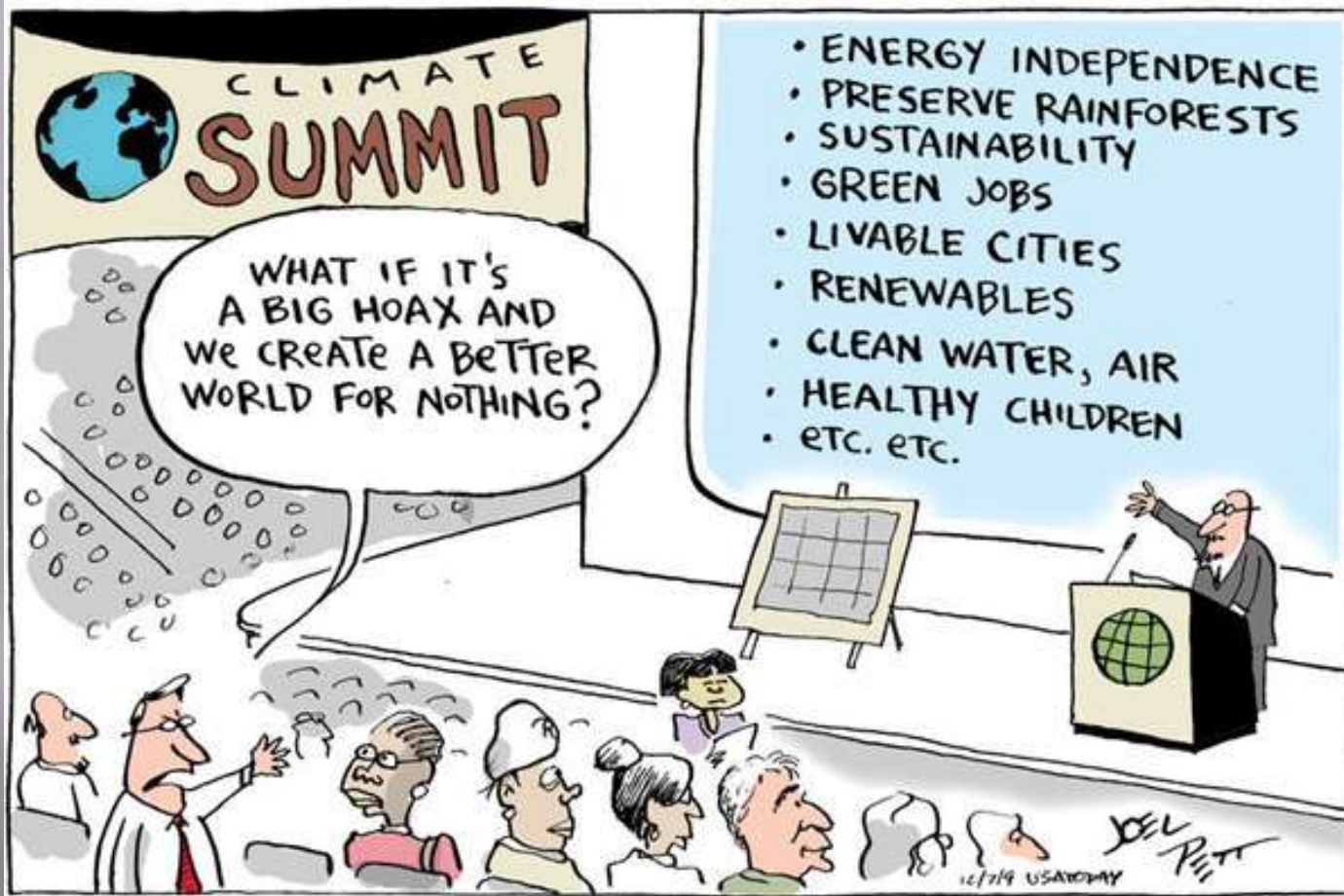


**IS THE COST
OF REDUCING
EMISSIONS WITH
CAP AND TRADE
LEGISLATION
WORTH IT?**









CLIMATE SUMMIT

WHAT IF IT'S A BIG HOAX AND WE CREATE A BETTER WORLD FOR NOTHING?

- ENERGY INDEPENDENCE
- PRESERVE RAINFORESTS
- SUSTAINABILITY
- GREEN JOBS
- LIVABLE CITIES
- RENEWABLES
- CLEAN WATER, AIR
- HEALTHY CHILDREN
- etc. etc.



12/19 USA TODAY
JUL PITT

John Muir

“When we try to pick out anything by itself, we find it hitched to everything else in the universe.”

